



SINGLE FLANGE WHEELS

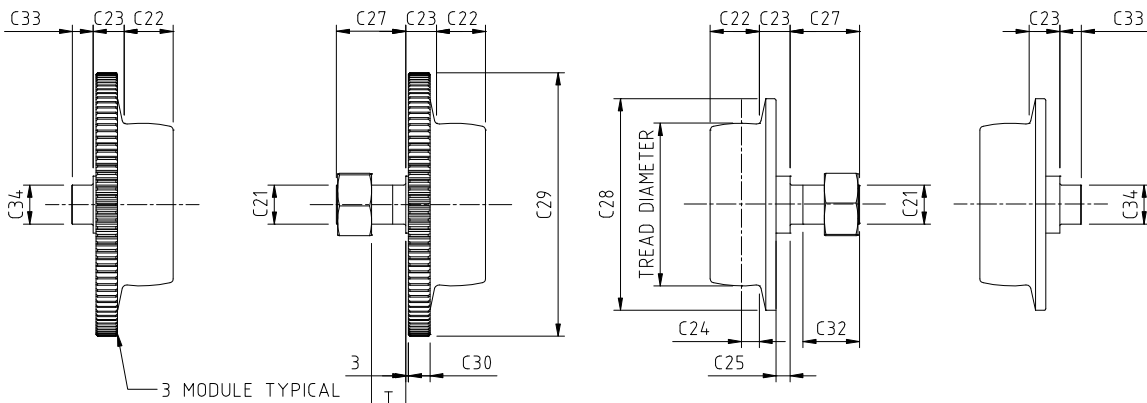
JDN MONOCRANE SW Series wheels are manufactured in Ductile Iron, Grade 500-7(GGG-50), providing a balance between strength, ductility and wear resistance. Featuring shielded ball bearings and machine cut teeth.

Our large range of single flange wheels provide for operation on most types of monorail beams and tracks.

The wheel is available with either a plain flange or integral machine cut ring gear.

Both types feature a spherical tread profile which is compatible with both parallel and tapered beam flanges.

The standard configuration consists of a stationary cantilevered axle with shielded anti-friction bearings mounted inboard in the wheel.



**GEARED WHEEL
WELD IN AXLE**
(PART No eg SW200G-W)

**GEARED WHEEL
SCREWED AXLE**
(PART No eg SW200G)

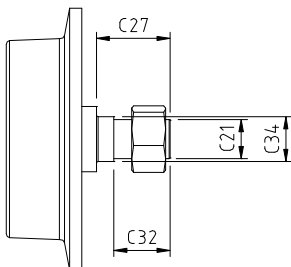
**PLAIN WHEEL
SCREWED AXLE**
(PART No eg SW200P)

**PLAIN WHEEL
WELD IN AXLE**
(PART No eg SW200P-W)

PART No.	TREAD DIAM.	C21	C22	C23	C24	C25	T	C27	C28	C29	C30	No of TEETH	C32	C33	C34
SW063	63	16	16	14	6	2.5	16	33	89	-	-	-	25	6	16
SW075	75	20	18	20	7	8.5	20	40	105	126	12	40	35	12	20
SW090	90	24	22	21	8	4	20	45	125	150	13	48	35	14	25
SW105	105	30	23	23	12	4.4	25	54	140	174	15	56	44	20	30
SW120	120	30	38	25	13	11	25	54	160	198	16	64	44	20	30
SW150	150	36	47	30	16	15	35	70	200	246	20	80	50	25	40
SW200	200	48	56	36	20	16	40	80	260	324	25	106	65	25	50
SW250	250	48	65	39	28	17	45	85	320	408	28	134	65	25	55
SW300	300	64	68	42	28	20	45	95	370	489	31	161	70	30	70

* All dimensions in mm and subject to change without notice.

NOTE: Screwed Axle for SW250 wheels only



WHEEL No	WHEEL LOADING PER 4 WHEELS (kg)		
	M3/M4	M5/M6	M7/M8
SW063	630	500	400
SW075	1250	1000	800
SW090	2500	2000	1600
SW105	5000	4000	3200
SW120	8000	6300	5000
SW150	12500	10000	8000
SW200	20000	16000	12500
SW250	25000	20000	16000
SW300	32000	25000	20000